



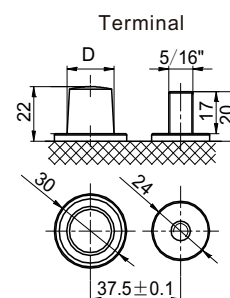
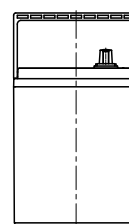
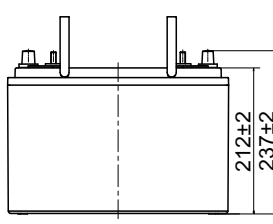
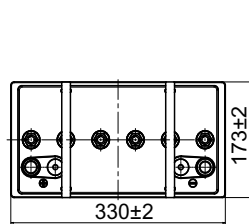
# LEAD BATTERY

## BATTERIE PLOMB

### 12V 107Ah

#### MAIN INFORMATION / INFORMATIONS GÉNÉRALES

|   |                      |                          |
|---|----------------------|--------------------------|
| <b>BRAND</b>  | MARQUE               | NX                       |
| <b>TECHNOLOGY</b>   | TECHNOLOGIE          | AGM Lead acid            |
| <b>VOLTAGE</b>  | TENSION              | 12V                      |
| <b>CAPACITY</b>   | CAPACITÉ             | 118Ah (C20) / 107Ah (C5) |
| <b>CASING</b>   | TYPE DE BAC          | ABS                      |
| <b>TERMINAL</b>   | TYPE DE COSSES       | Double bornes            |
| <b>DIMENSIONS</b>   | DIMENSIONS           |                          |
| • Length / Longueur   |                      | 330 mm                   |
| • Width / Largeur   |                      | 173 mm                   |
| • Height / Hauteur  |                      | 212 mm                   |
| • Total height with terminals / Hauteur totale (avec cosse) |                      | 237 mm                   |
| <b>WEIGHT (±4%)</b>   | POIDS (±4%)          | 31,7 kg                  |
| <b>TEMPERATURE RANGE</b>                                    | PLAGE DE TEMPÉRATURE |                          |
| • Discharging / Décharge                                    |                      | -20 °C - +55 °C          |
| • Charging / Charge   |                      | 0 °C - +40 °C            |
| • Storage / Stockage  |                      | -15 °C - +40 °C          |



#### PRODUCT DESCRIPTION / DESCRIPTION DU PRODUIT

**UK:** The NX Deep Cycle AGM batteries are designed with pure materials, specifically 99% pure lead, to provide high energy density and withstand significant and repeated discharges.

**FR:** Les batteries de la gamme NX Deep Cycle AGM sont conçues avec des matériaux purs (plomb pur à 99%) afin de fournir une grande densité énergétique et supporter des décharges importantes et répétées.

#### MAIN FEATURES / CARACTÉRISTIQUES PRINCIPALES

##### OPTIMIZED PERFORMANCE

- Heavy duty grid/paste design and Thick plates suitable for deep and intensive cycling: Up to 800 cycles at 80% Depth of Discharge (DOD).
- The use of 99.99% pure lead and the addition of carbon additives provide significant resistance to deep cycling.
- The addition of carbon additives promotes high current acceptance (fast charging) and improves battery performance in partial state of charge (PSoC) conditions.

##### EXTENDED LIFESPAN

- A structure with two separators between the electrodes significantly extends the lifespan and provides greater resistance to vibrations.
- The use of an innovative plate humidification system reduces internal resistance and prevents battery sulfation (main cause of AGM battery failure).

##### PERFORMANCES OPTIMISÉES

- Plaques épaisses adaptées aux cyclages profonds et intensifs: Jusqu'à 800 cycles à 80% DOD
- L'usage d'un plomb pur à 99,99% et le complément d'additifs carbone offre une résistance importante aux cyclages profonds.
- L'ajout d'additif carbone favorise l'acceptation de courant de charge important (charge rapide), et améliore les performances des batteries en état de charge partielle (PSoC).

##### DURÉE DE VIE PROLONGÉE

- Structure avec 2 séparateurs entre les électrodes qui permet de rallonger la durée de manière significative et une plus grande résistance aux vibrations.
- L'usage d'un système d'humidification des plaques innovant permet de baisser la résistance interne et prévient la sulfatation de la batterie. (Principale cause de défaillance des batteries AGM).

**CAUTION / AVERTISSEMENT**

Operation in any orientation except permanently inverted.  
 Continuous use of the battery in a permanently inverted position may adversely affect battery life and performance.  
 End-of-life NX batteries must be recycled in accordance with current legislation.

Fonctionnement dans n'importe quel sens sauf en utilisation inversée continue.  
 L'utilisation continue de la batterie en position inversée peut impacter négativement sa durée de vie et ses performances.  
 Les batteries NX en fin de vie doivent être recyclées selon la législation en vigueur.

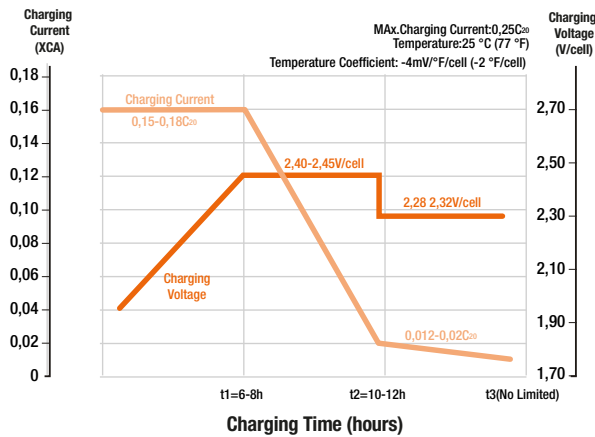
**APPLICATIONS\***

\* Non exhaustive list / Liste non-exhaustive

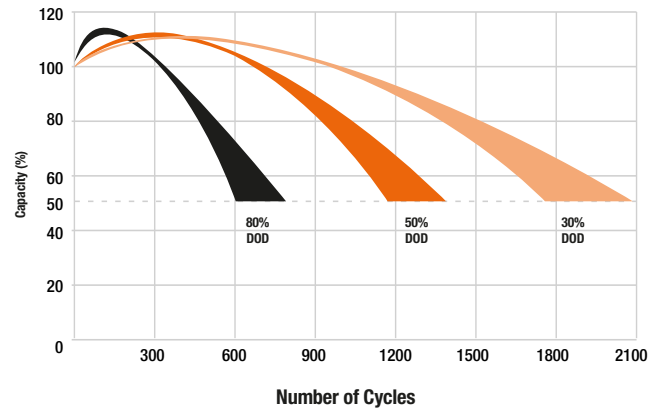
- Golf Carts
- Electric wheelchair
- Electric scooters
- Motorhome equipment
- Industrial cleaning machines
- Forklift truck
- Marine Applications
- Solar energy

- Voitures de golf
- Fauteuils roulants électriques
- Scooters électriques
- Équipements de camping-car
- Engins de nettoyage
- Chariots élévateurs
- Applications marines
- Énergie solaire

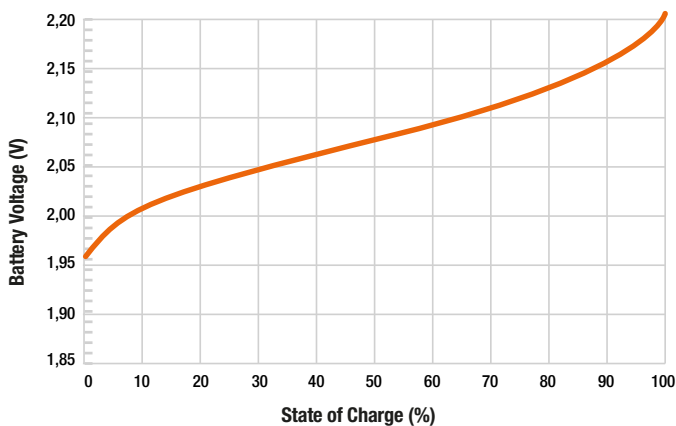
**CHARGING PROFILE**



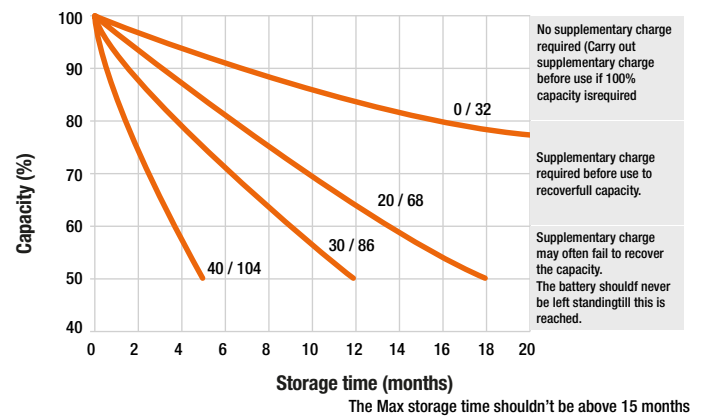
**CYCLE LIFE IN RELATION TO DEPTH OF DISCHARGE**



**RELATIONSHIP OF OCV & STATE OF CHARGE (25 °C, 77 °F)**



**SELF DISCHARGE CHARACTERISTICS**



OUTLINE SAFETY WARNING: USE ONLY WITH IN THE ALLOWED PARAMETERS. Do not short circuit or over-load the battery. Charge only using an approved charger designed specifically to charge this battery. Do not heat above maximum temperatures indicated. Never crush, mutilate, puncture or abuse the battery. Do not dismantle the pack or disable any of the protective devices or circuits. DO NOT USE THE BATTERY IF YOU SUSPECT IT MAY BE FAULTY OR DAMAGED.

© Copyright Enix Energies 2005. NB: This document and the product design are the intellectual property of Enix Energies. No document or design may be copied or used for commercial purposes without written permission of Enix Energies. Users must satisfy themselves, by means of testing etc, that products are suitable for their application. Data in this document is for general guidance only; consult cell manufacturers data for definitive information. Information is given free of charge and in good faith, but no responsibility can be accepted for any errors or omission or costs or losses or liabilities arising from the use of this information. All business is conducted to Enix Energies terms and conditions only.